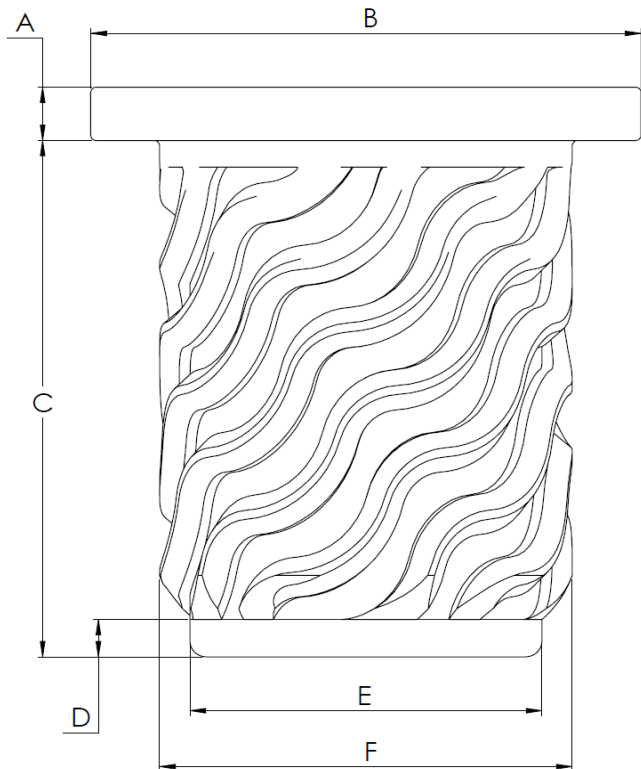


Standard GripTide Part Matrix



REFERENCE DIMENSIONS*								
Part Number	Internal Thread	Part Status	Flange Thickness	Flange Diameter	Under-Flange Length	Pilot Length	Pilot Diameter	Typical GripTide Pattern Diameter
			A	B	C	D	E	F
M5 Standard	M5	Active	1.30	9.50	9.50	1.00	7.00	8.26
M6 Standard	M6	Active	1.25	11.00	12.70	1.25	8.00	9.73
M6 Large Flange	M6	Concept	1.25	14.00	12.70	1.25	8.00	9.73
M6 Short	M6	Concept	1.25	11.00	10.50	1.25	8.00	9.73
M6 Short Large Flange	M6	Concept	1.25	14.00	10.50	1.25	8.00	9.73
M8 Standard	M8	Concept	1.50	13.20	11.00	1.25	10.00	-
M10 Standard	M10	Concept	1.50	17.60	11.00	1.25	14.00	-

*TABULATED DIMENSIONS ARE REFERENCE ONLY. CONSULT INDIVIDUAL PART PRINTS FOR DIMENSIONS AND TOLERANCES

	Type A	Type B
Finish	ZinKlad 250 or Engineering Approved Equiv.	ZinKlad 1000 or Engineering Approved Equiv.
Thickness	8 µm MIN	8 µm MIN
Corrosion	250 hrs	768 hrs
Description	Clear Trivalent Zn Electroplate	Clear Trivalent Zn/Ni Electroplate